



C&D TRUE FRONT ACCESS®

TEL Series Float Service



TEL12-115FN



TEL12-115FNG

with TFA gas collection system

BENEFITS:

- Long Life Float Service Design
 - Confirmed via 3rd party Certification
 - Premium alloy and material components
- True Front Access Design
 - True Front Access gas collection system (optional)
 - True direct connect terminal for reliability
 - C&D Ohmic Ring® for accurate testing
 - Ideal fit for 19" Relay Racks
- Maximum Performance
 - Superior output due to direct terminal connection
 - Low internal resistance
- Compliant to major global specifications
 - British Standard BS 6290: Part 4: 1997
 - IEC 60896-21/22
 - Telcordia SR-4228
 - Eurobat Guide Classification: Long Life
 - Bellcore GR-63-CORE & GR-1089-CORE
 - UL94 V-0FR and Venting Operation
 - Non-Hazardous, not restricted for any transportation mode (air, water or land)



Typical Wireline Application



Typical Wireless Application

SPECIFICATIONS

Battery	Voltage Per Unit	Ampere Hour Capacity 8 Hour Rate @ 77°F (25°C) to 1.75 v/c	Ampere Hour Capacity 10 Hour Rate @ 68°F (20°C) to 1.80 v/c	Maximum Discharge Current	Short Circuit Current	Ohms Impedance 60 Hz (Ω)	Battery Weight
TEL12-115FN/FNG	12 V	108 Ah	102 Ah	800 Amperes	4000 Amperes	0.0030 Ohms	73 lbs/33 kg

SPECIFICATIONS

Ampere Hour Capacity to 1.75 Volts per Cell @77°F (25°C)
Discharge in Hours

Model	1	2	3	4	5	6	7	8	10	12	20	24
TEL12-115FN/FNG	71	82	89	95	100	103	105	108	110	113	120	122

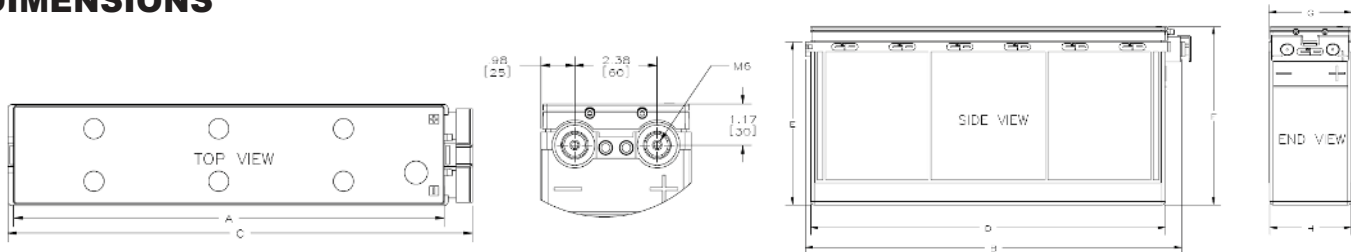
You may also access the product ratings by logging onto the C&D Battery Sizing program at www.cdstandbypower.net or www.cdbatterysizing.com

Ampere Hour Capacity to 1.80 Volts per Cell @68°F (20°C)
Discharge in Hours

Model	1	2	3	4	5	6	7	8	10	12	20	24
TEL12-115FN/FNG	66	76	83	88	92	95	97	99	102	105	112	114

You may also access the product ratings by logging onto the C&D Battery Sizing program at www.cdstandbypower.net or www.cdbatterysizing.com

DIMENSIONS



MODEL	A		B		C		D		E		F		G		H	
	in	mm	in	mm	in	mm	in	mm	in	mm	in	mm	in	mm	in	mm
TEL12-115FN	18.5	469	19.5	496	20.1	511	18.4	468	8.5	216	9.1	232	4.3	110	4.2	107
TEL12-115FNG	18.5	469	19.5	496	20.1	511	18.4	468	8.5	216	9.3	235	4.3	110	4.2	107

* All dimensions in inches and (millimeters). All dimensions are for reference only. Contact a C&D Representative for complete dimensional information.

Operating Temperature Range with temperature compensation	Discharge: -40°F (-40°C) to +160°F (71°C) Charge: -10°F (-23°C) to +140°F (60°C)						
Nominal Operating Temperature Range	+68°F (20°C) to +80°F (27°C)						
Recommended Maximum Charging Current Limit	C ₂₀ /5 Amperes (24.0 A)						
Float Charging Voltage	13.5 to 13.8 VDC average per 12V unit						
Maximum AC Ripple (Charger)	0.5% RMS or 1.5% P-P of float charge voltage recommended for best results. Max AC ripple voltage allowed = 1.4% RMS (4% P-P) Max AC ripple current allowed = (C ₂₀ /20)						
Self Discharge	Battery can be stored up to 6 months at 77°F (25°C) before a freshening charge is required. Batteries stored at temperatures greater than 77°F (25°C) will require recharge sooner than batteries stored at lower temperatures. See C&D bulletin 41-7272, Self-Discharge and Inventory Control for details.						
Equalize charge and cycle service voltage	14.40 to 14.80 VDC average per 12V unit @ 77°F (25°C)						
Terminal: Inserted - Inter-unit connector and hardware provided	Threaded copper alloy insert terminal to accept M6 bolt						
Terminal Hardware Torque	110 in.-lbs. (12.4 N-m)						
Telcordia Part Numbers	<table border="0"> <tr> <td>Battery Part Number</td> <td>CLEI Code</td> <td>CPR</td> </tr> <tr> <td>TEL12-115FN/FNG</td> <td>PBMYAE8KRA</td> <td>215191</td> </tr> </table>	Battery Part Number	CLEI Code	CPR	TEL12-115FN/FNG	PBMYAE8KRA	215191
Battery Part Number	CLEI Code	CPR					
TEL12-115FN/FNG	PBMYAE8KRA	215191					

C&D TECHNOLOGIES, INC.

1400 Union Meeting Road
P.O. Box 3053 • Blue Bell, PA 19422-0858
(215) 619-2700 • Fax (215) 619-7899 • (800) 543-8630
customersvc@cdtechno.com
www.cdtechno.com

Any data, descriptions or specifications presented herein are subject to revision by C&D Technologies, Inc. without notice. While such information is believed to be accurate as indicated herein, C&D Technologies, Inc. makes no warranty and hereby disclaims all warranties, express or implied, with regard to the accuracy or completeness of such information. Further, because the product(s) featured herein may be used under conditions beyond its control, C&D Technologies, Inc. hereby disclaims all warranties, either express or implied, concerning the fitness or suitability of such product(s) for any particular use or in any specific application or arising from any course of dealing or usage of trade. The user is solely responsible for determining the suitability of the product(s) featured herein for user's intended purpose and in user's specific application.

Copyright 2012 C&D TECHNOLOGIES, INC. Printed in U.S.A. 12-1063 0615-CD