



POWER STORAGE SOLUTIONS
 "Power is at the center of everything we do"

SCLFP48100 3U

Lithium-ion battery system

- Increased energy density
- Ease of installation
- Longer life in uncontrolled environments
- Built-in battery control

Nominal Characteristics		
Battery Model		SCIFP48100 3U
Nominal Voltage		48V
Typical Capacity		100Ah (25°C)
Typical Energy		4800 Wh
Volumetric Energy Density		208.7 Wh/dm³
Gravimetric Energy Density		115.7 Wh/kg
Dimensions	Width	17.32 inches, 440mm
	Height	5.20 inches, 132mm
	Depth	15.59 inches, 396mm
Reference Weight		91.5 lbs. /41.5Kg
Electrical Characteristics		
Voltage Window		40.5~ 54.0V
Charge Voltage Range		52.5~ 54.0V
Max. Permanent Discharge Current		100A
Max. Permanent Charge Current		100A
Faradic Charge Efficiency		99% (+20°C)
Energy Charge Efficiency		94% (+20°C)
Communication Interface (optional feature)		Modbus/SNMP/TACP
Operation Environment		
Charge Temperature		0°C to +55°C
Discharge Temperature		-20°C to +60°C
Storage Temperature		-20°C to +60°C
Protection Class		IP20

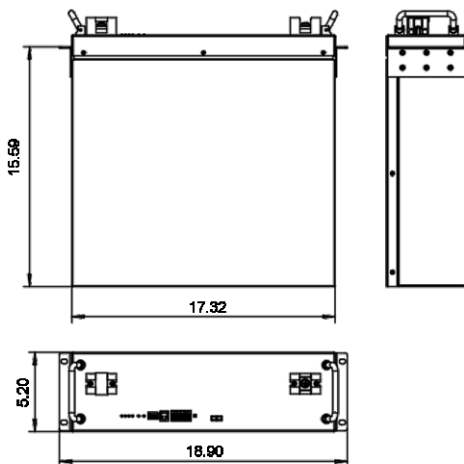
Product Standards

- IEC 60950
- IEC 62321
- IEC 62133
- UN 383
- UN 1642
- UN 1973

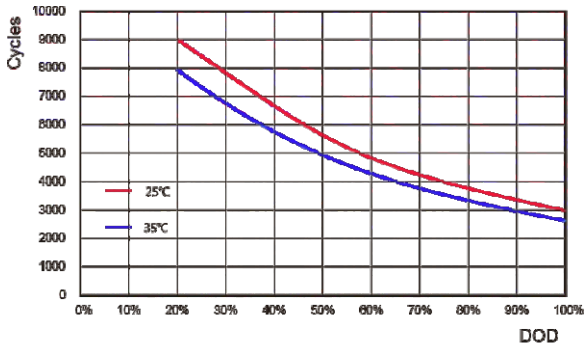
MS Certification

- ISO 9001
- ISO 14001
- OHSAS 18001

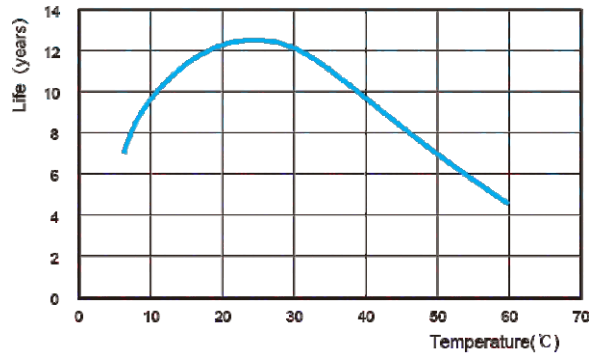
SCLFP48100 3U is a powerful 48 Volt LiFePO4 battery model which has been specifically designed to provide battery backup for rack or cabinet telecom sites. It's modular design enables parallel installation to meet the needs of longer backup times. Can be used inside or outside plant applications.



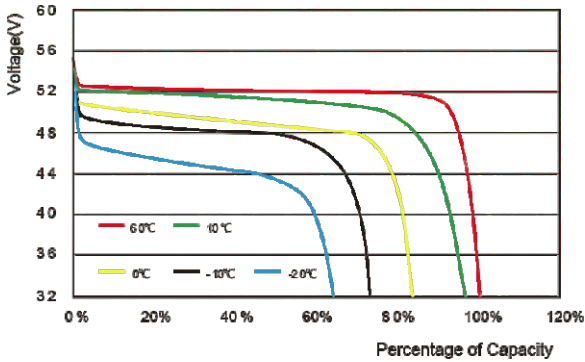
Performance Curves



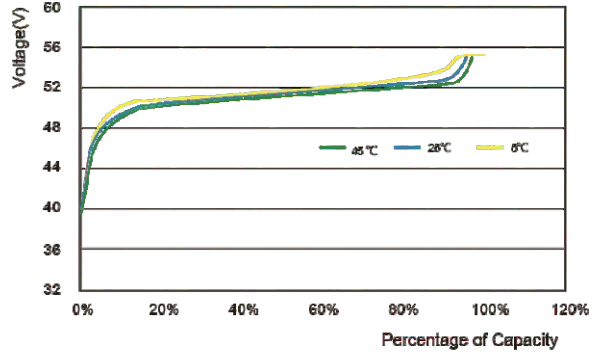
Cycle Life vs. Depth of Discharge (DOD)



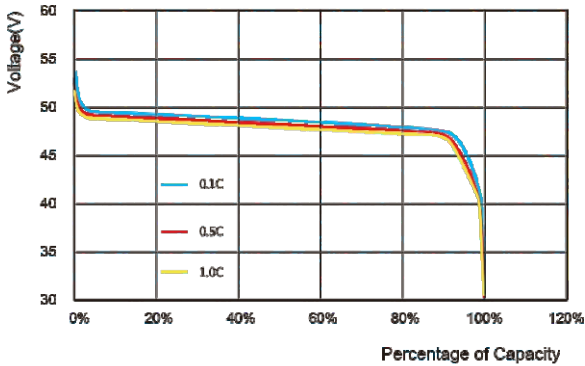
Calendar Life at Different Temperature



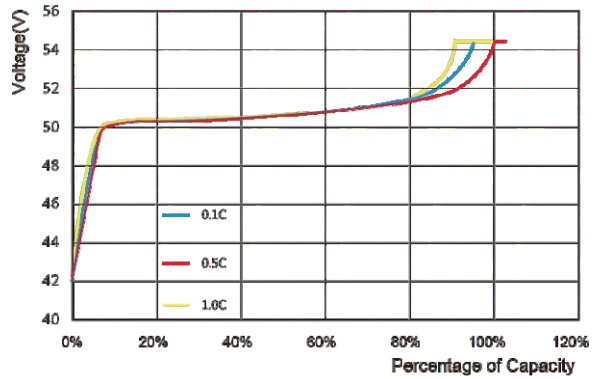
Discharge Curve at Different Temperature



Charge Curve at Different Temperature



Discharge Curve at Different Rate (25°C)



Charge Curve at Different Rate (25°C)

Constant Current Discharge Data @ 25°C Hours

Current A	0.1C	0.2C	0.3C	0.4C	0.5C	0.6C	0.7C	0.8C	0.9C	1.0C
45.0	8.333	4.033	2.6	1.908	1.417	1.033	0.233	0.142	0.225	0.058
43.5	9.45	4.658	3.083	2.333	1.842	1.542	1.258	0.967	0.883	0.75
42.0	10.137	5.078	3.377	2.605	2.092	1.7	1.492	1.292	1.15	1.033
40.5	10.183	5.092	3.4	2.625	2.1	1.717	1.5	1.3	1.175	1.042