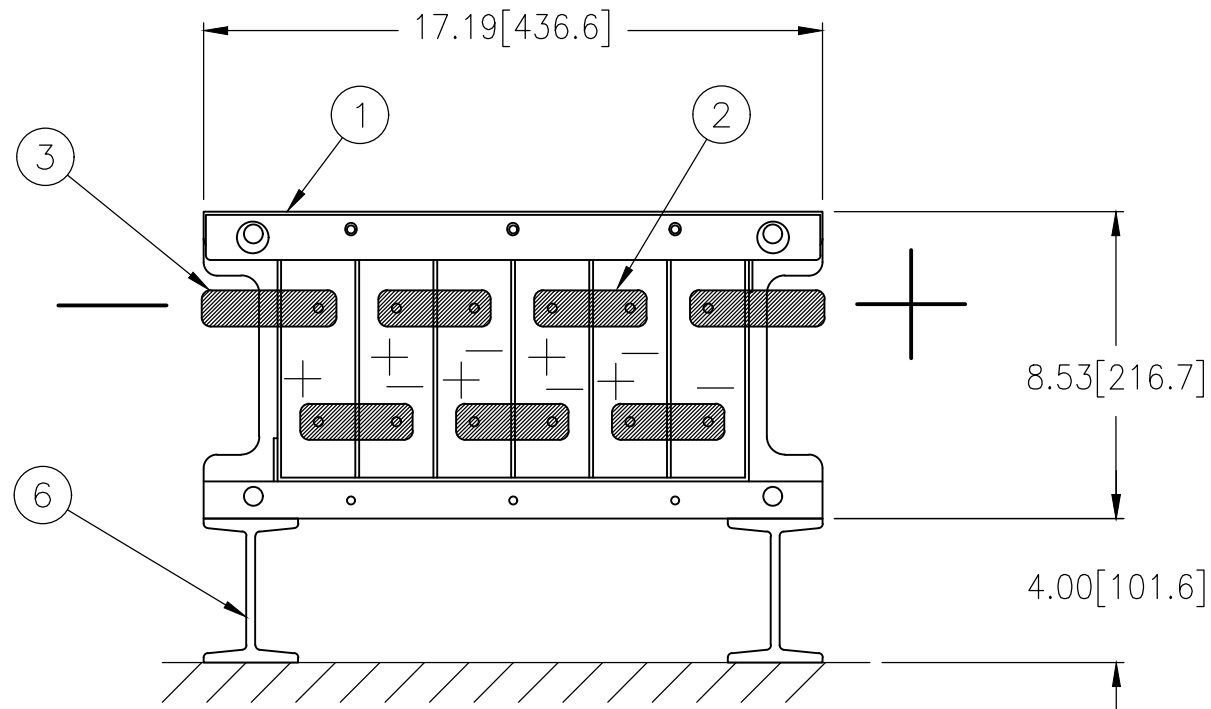


REVISIONS					
ECO NO.	REV	DESCRIPTION	DATE	DRAFT	APPRV
1600134	0	NEW RELEASE	06/29/2015	PWM	MJ



NOTES:

1. DEPTH COVER TO BACK: 16.22 [412.0]
2. APPROXIMATE WEIGHT PER STACK:
1 HIGH: 157 lbs [71 kg]
3. USE M6 X 25 BOLTS IN ALL POSTS UNLESS OTHERWISE NOTED.
4. TERMINAL PLATE ASSEMBLIES WILL ADD TO OVERALL DIMENSIONS; CONSULT I&O MANUAL FOR DETAILS.

12	W02-062501	BOLT M6 X 25 A2	NOT SHOWN	9
12	W03-0601	WASHER M6 X 6.4 17.0 3.0 A2	NOT SHOWN	8
1	K17-TPCOV705A	COVER AGP-05 TOP ASSY CLEAR	NOT SHOWN	7
1	K17-417026	KIT HORIZONTAL SUPPORT		6
1	K17-417003LP	KIT TERMINAL PLATE STANDARD	NOT SHOWN	5
1	K17-400403	KIT AGP ACCESSORY	NOT SHOWN	4
2	L03-410820-001	CONNECTOR 1.00 X .12		3
5	L03-109209-001	CONNECTOR 1.00 X .06		2
1	M52-6050053 (M53-6050053)	006AGP 05005W -+-+--		1
X	M87-006-05005-011AAM(V)	6-50G05 MEDIUM		X
QTY	PART OR IDENT NO.	NOMENCLATURE OR DESCRIPTION	REMARKS	ITEM

PARTS LIST

UNLESS OTHERWISE SPECIFIED DIMENSIONS ARE IN INCHES TOLERANCES ARE:		THE USE OF INFORMATION CONTAINED HEREIN IS RESTRICTED FOR THE BENEFIT OF STRYTEN MANUFACTURING LLC ONLY. UNAUTHORIZED USE OR DISCLOSURE, COPYING OR OTHERWISE REPRODUCING (IN ANY MANNER) ANY PORTION OF THIS DRAWING WITHOUT PRIOR WRITTEN PERMISSION OF AN AUTHORIZED OFFICIAL OF STRYTEN MANUFACTURING LLC, IS PROHIBITED.			
DECIMALS	[MM]	FRACTIONAL	ANGLE		
.X±	X±	±	±	TITLE	
.XX±	0.X±			6 CELL ABSOLUTE 50G05 (V-0)	
.XXX±	0.XX±			1 STACK/1 HIGH	
	DO NOT SCALE DRAWING			60 MINUTES OR LONGER BACKUP TO 1.75 VPC	
MATERIAL:	V-0 SYSTEM DENOTED BY ()	DRAWN	P. MATTALIANO	DATE	06/29/2015
		CHECK	P. MATTALIANO	DATE	06/29/2015
		DESIGN	P. MATTALIANO	DATE	06/29/2015
PROCESS:		THIRD ANGLE PROJECTION	CAD REFERENCE	SIZE	CAGE CODE
			CREATED WITH AC	B	88219
		REMOVE ALL BURRS AND BREAK SHARP EDGES	DIMENSIONS IN [] ARE MILLIMETERS	DRAWING NO.	440503
				REV	0
				SCALE: 3/32	SHEET 1 OF 1
				THIS DWG. SUPERCEDES	

Z66-440503	AA
M87-006-05005-011AAMV	AA
M87-006-05005-011AAM	AA
PART NUMBER	PART REV