

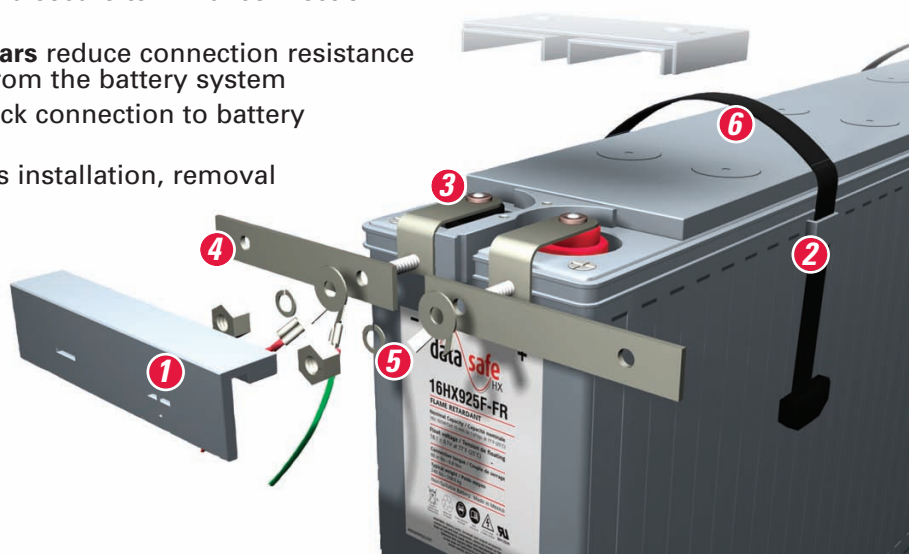
data safe™



16VOLT FRONT TERMINAL BATTERY CABINETS

Features & Benefits

- 1. Insulating covers** with voltmeter probe access enhance safety and simplify maintenance
- 2. Integrated handle support** doubles as an automatic spacer between units to enhance airflow and thermal management
- 3. Nord-Lock® Washer** provides a secure terminal connection over the life of the battery
- 4. Solid tin-plated copper busbars** reduce connection resistance to enhance power delivery from the battery system
- 5. Dual-tab washer** enables quick connection to battery monitoring systems
- 6. Nylon strap handle** simplifies installation, removal and replacement





- 16Volt Front Terminal Battery Systems have Energy Density Advantage over 12Volt Battery Systems
- Lower Maintenance Costs
- Front Terminal Access
- Less Connections Per 480 Volts
16Volt = 30 Connections
12Volt = 40 Connections

Certifications

- UL and cUL (Canadian UL) listed
- International Building Code 2006 Certified
- California Building Code 2007 Certified
- California Office of Statewide Health Planning and Development Certified (OSHPD)

Constant Power Discharge Rates - 480V System kW at 25°C (77°F) to 1.67 VPC

| DataSafe® 16HX-FT battery | Strings | Standby Time (Minutes) | | | | | | | |
|------------------------------|---------|------------------------|------|------|-----|-----|-----|-----|-----|
| | | 5 | 10 | 15 | 20 | 25 | 30 | 45 | 60 |
| 16HX550F | 1 | 212 | 163 | 132 | 108 | 91 | 79 | 57 | 45 |
| | 2 | 424 | 326 | 264 | 217 | 183 | 159 | 115 | 91 |
| | 3 | 636 | 489 | 396 | 325 | 275 | 239 | 173 | 137 |
| | 4 | 848 | 653 | 528 | 434 | 366 | 318 | 231 | 182 |
| | 5 | 1061 | 816 | 660 | 542 | 458 | 398 | 289 | 228 |
| 16HX800F | 1 | 285 | 235 | 192 | 162 | 140 | 123 | 90 | 72 |
| | 2 | 571 | 470 | 384 | 323 | 279 | 246 | 180 | 144 |
| | 3 | 857 | 706 | 576 | 485 | 420 | 370 | 272 | 216 |
| | 4 | 1143 | 941 | 768 | 647 | 560 | 494 | 362 | 288 |
| | 5 | 1429 | 1177 | 960 | 809 | 700 | 617 | 453 | 360 |
| 16HX925F | 1 | 314 | 271 | 222 | 182 | 155 | 136 | 99 | 79 |
| | 2 | 628 | 543 | 444 | 365 | 311 | 273 | 189 | 158 |
| | 3 | 942 | 816 | 666 | 548 | 467 | 410 | 299 | 237 |
| | 4 | 1256 | 1087 | 888 | 731 | 622 | 546 | 399 | 316 |
| | 5 | 1570 | 1359 | 1110 | 914 | 778 | 683 | 499 | 396 |

NOTE: Weight dimensions and system number represents one 480V string per cabinet and top terminated breaker (grey cabinet color)

| 16V System Number | KWB** | Run Time @ 77°F to 1.67 Vpc | System Voltage | Strings (Cabinets) | L | Inches D Per Cabinet | H | System Square Feet Per Cabinet | System Weight lbs Per Cabinet |
|-------------------|-------|-----------------------------------|-------------------|-----------------------|-----|----------------------------|----|--------------------------------------|-------------------------------------|
| 16HX550F | | | | | | | | | |
| ST65550480B0400* | 213 | 20 | 480 | 2 | 64 | 34 | 84 | 15.1 | 10,500 |
| ST65550480B0250* | 213 | 34 | 480 | 3 | 96 | 34 | 84 | 22.7 | 15,750 |
| ST65550480B0250* | 213 | 49 | 480 | 4 | 128 | 34 | 84 | 30.2 | 21,000 |
| 16HX800F | | | | | | | | | |
| ST65800480B0800* | 213 | 12 | 480 | 1 | 50 | 34 | 84 | 11.8 | 8,500 |
| ST65800480B0400* | 213 | 36 | 480 | 2 | 100 | 34 | 84 | 23.6 | 17,000 |
| ST65800480B0250* | 213 | 61 | 480 | 3 | 150 | 34 | 84 | 35.4 | 25,500 |
| 16HX925F | | | | | | | | | |
| ST65925480B0800* | 213 | 16 | 480 | 1 | 50 | 34 | 84 | 11.8 | 8,960 |
| ST65925480B0400* | 213 | 41 | 480 | 2 | 100 | 34 | 84 | 23.6 | 17,920 |
| ST65925480B0250* | 213 | 68 | 480 | 3 | 150 | 34 | 84 | 35.4 | 26,880 |
| 16HX800F | | | | | | | | | |
| ST65800480B0800* | 474 | 9 | 480 | 2 | 100 | 34 | 84 | 23.6 | 17,000 |
| ST65800480B0600* | 474 | 20 | 480 | 3 | 150 | 34 | 84 | 35.4 | 25,500 |
| ST65800480B0400* | 474 | 31 | 480 | 4 | 200 | 34 | 84 | 47.2 | 34,000 |
| ST65800480B0400* | 474 | 42 | 480 | 5 | 250 | 34 | 84 | 59.0 | 42,500 |
| 16HX925F | | | | | | | | | |
| ST65925480B0800* | 474 | 13 | 480 | 2 | 100 | 34 | 84 | 23.6 | 17,920 |
| ST65925480B0600* | 474 | 24 | 480 | 3 | 150 | 34 | 84 | 35.4 | 26,880 |
| ST65925480B0400* | 474 | 36 | 480 | 4 | 200 | 34 | 84 | 47.2 | 35,840 |
| ST65925480B0400* | 474 | 48 | 480 | 5 | 250 | 34 | 84 | 59.0 | 44,800 |
| 16HX800F | | | | | | | | | |
| ST65800480B0800* | 711 | 9 | 480 | 3 | 150 | 34 | 84 | 35.4 | 25,500 |
| ST65800480B0600* | 711 | 17 | 480 | 4 | 200 | 34 | 84 | 47.2 | 34,000 |
| ST65800480B0600* | 711 | 24 | 480 | 5 | 250 | 34 | 84 | 59.0 | 42,500 |
| 16HX925F | | | | | | | | | |
| ST65925480B0800* | 711 | 13 | 480 | 3 | 150 | 34 | 84 | 35.4 | 26,880 |
| ST65925480B0600* | 711 | 20 | 480 | 4 | 200 | 34 | 84 | 47.2 | 35,840 |
| ST65925480B0600* | 711 | 28 | 480 | 5 | 250 | 34 | 84 | 59.0 | 44,800 |
| 16HX800F | | | | | | | | | |
| ST65800480B0800* | 758 | 8 | 480 | 3 | 150 | 34 | 84 | 35.4 | 25,500 |
| ST65800480B0600* | 758 | 15 | 480 | 4 | 200 | 34 | 84 | 47.2 | 34,000 |
| ST65800480B0600* | 758 | 22 | 480 | 5 | 250 | 34 | 84 | 59.0 | 42,500 |
| 16HX925F | | | | | | | | | |
| ST65925480B0800* | 758 | 11 | 480 | 3 | 150 | 34 | 84 | 35.4 | 26,880 |
| ST65925480B0600* | 758 | 19 | 480 | 4 | 200 | 34 | 84 | 47.2 | 35,840 |
| ST65925480B0600* | 758 | 25 | 480 | 5 | 250 | 34 | 84 | 59.0 | 44,800 |
| 16HX800F | | | | | | | | | |
| ST65800480B0800* | 947 | 9 | 480 | 4 | 200 | 34 | 84 | 47.2 | 34,000 |
| ST65800480B0600* | 947 | 15 | 480 | 5 | 250 | 34 | 84 | 59.0 | 42,500 |
| 16HX925F | | | | | | | | | |
| ST65925480B0600* | 947 | 13 | 480 | 4 | 200 | 34 | 84 | 47.2 | 35,840 |
| ST65925480B0600* | 947 | 19 | 480 | 5 | 250 | 34 | 84 | 59.0 | 44,800 |
| 16HX800F | | | | | | | | | |
| ST65800480B0800* | 1042 | 7 | 480 | 4 | 200 | 34 | 84 | 47.2 | 34,000 |
| ST65800480B0800* | 1042 | 12 | 480 | 5 | 250 | 34 | 84 | 59.0 | 42,500 |
| 16HX925F | | | | | | | | | |
| ST65925480B0800* | 1042 | 10 | 480 | 4 | 200 | 34 | 84 | 47.2 | 35,840 |
| ST65925480B0800* | 1042 | 16 | 480 | 5 | 250 | 34 | 84 | 59.0 | 44,800 |

* Breaker Options Include (add appropriate letter at the end of the system number for proper breaker option)

A = 24 VDC Shunt Trip and Dual Aux Contacts
 B = 48 VDC Shunt Trip and Dual Aux Contacts
 C = 24 UVR and Dual Aux Contacts
 D = 48 UVR and Dual Aux Contacts

E = 250V Shunt Trip
 F = Aux Contact
 G = 220V Shunt Trip

** KWB is based on 90% Power Factor and 95% Efficiency

Ordering Guide

Cabinet System Order Code:

ST - 6 - 5 - 925 - 480 - B0800 - A

| Breaker Location and Cabinet Color | Number of Blocs Wide | Number of Blocs/Shelves High | Cell Model | System Voltage | Breaker Size | Breaker Options |
|--|----------------------|------------------------------|--|--------------------------|--|--|
| ST = Top Breaker, Grey SA = Top Breaker, Black SS = Side Breaker, Grey SB = Side Breaker, Black | 6 | 4 5 | 550 = 16HX550F 800 = 16HX800F 925 = 16HX925F | 384 = 384V 480 = 480V | B0250 = 250 Amp B0400 = 400 Amp B0600 = 600 Amp B0800 = 800 Amp B0A00 = 1000 Amp | A = 24 VDC Shunt Trip and Dual Aux. Contacts B = 48 VDC Shunt Trip and Dual Aux. Contacts C = 24 UVR and Dual Aux Contacts D = 48 UVR and Dual Aux Contacts E = 250V Shunt Trip F = Aux. Contact G = 220V Shunt Trip |

Example: ST65925480B0800A

ST Cabinet System, Top Mounted Breaker, Grey color
6 6 Blocs Wide
5 5 Blocks/Shelves High
925 16HX925F
480 480V
B0800 800 Amp Breaker
A 24 VDC Shunt Trip and Dual Aux. Contacts

Cabinet Dimensions:

| | Breaker Location | Bloc Wide | Bloc High | 16HX800F & 16HX925F | | | 16HX550F | | |
|--------------|------------------|-----------|-----------|---------------------|-------|--------|----------|-------|--------|
| | | | | Width | Depth | Height | Width | Depth | Height |
| ST64 SA64 | Top | 6 | 4 | 50.0" * | 34.0" | 72.0" | 32.0" | 34.0" | 72.0" |
| ST65 SA65 | Top | 6 | 5 | 50.0" * | 34.0" | 84.0" | 32.0" | 34.0" | 84.0" |
| SS64 SB64 | Side | 6 | 4 | 60.5" * | 34.0" | 72.0" | 42.5" | 34.0" | 72.0" |
| SS65 SB65 | Side | 6 | 5 | 60.5" * | 34.0" | 84.0" | 42.5" | 34.0" | 84.0" |

* Configuration consists of 2 cabinets placed side-by-side due to weight restrictions.



connect@alpinepowersystems.com
877-993-8855

Battery Services for Backup Power

- Battery Installation
- Capacity and Acceptance Testing
- Preventative Maintenance
- Recycling

backup power | telecom | motive power
alpinepowersystems.com