

# NSB 100FT RED Battery<sup>®</sup>

Discharge tables @ 20°C (68°F)



## Current / A

Duration		End of Discharge Voltage					
Minutes	Hours	1.85	1.80	1.75	1.70	1.67	1.65
60	1	65.0	66.2	67.3	68.4	69.0	69.3
120	2	38.6	38.9	39.3	39.6	39.8	39.9
180	3	27.8	28.0	28.2	28.4	28.5	28.6
240	4	21.8	22.0	22.2	22.3	22.4	22.4
300	5	18.0	18.2	18.3	18.5	18.5	18.6
480	8	11.9	12.0	12.2	12.3	12.3	12.3
600	10	9.7	9.9	10.0	10.1	10.1	10.1
1200	20	5.1	5.2	5.3	5.3	5.4	5.4

## Capacity / Ah

Duration		End of Discharge Voltage					
Minutes	Hours	1.85	1.80	1.75	1.70	1.67	1.65
60	1	65.0	66.2	67.3	68.4	69.0	69.3
120	2	77.2	77.9	78.5	79.2	79.5	79.8
180	3	83.4	84.1	84.7	85.2	85.5	85.7
240	4	87.3	88.1	88.7	89.3	89.6	89.7
300	5	90.1	91.0	91.7	92.3	92.6	92.8
480	8	95.2	96.4	97.3	98.1	98.4	98.6
600	10	97.3	98.6	99.7	100.5	100.9	101.1
1200	20	102.9	104.4	105.7	106.7	107.1	107.3

## Power / WPC

Duration		End of Discharge Voltage					
Minutes	Hours	1.85	1.80	1.75	1.70	1.67	1.65
60	1	127.1	129.1	130.9	132.6	133.5	134.1
120	2	76.4	77.0	77.5	78.0	78.3	78.5
180	3	55.3	55.7	56.0	56.3	56.5	56.6
240	4	43.6	43.9	44.2	44.4	44.5	44.6
300	5	36.1	36.4	36.6	36.8	36.9	37.0
480	8	23.9	24.2	24.4	24.5	24.6	24.6
600	10	19.6	19.8	20.0	20.1	20.2	20.2
1200	20	10.4	10.5	10.6	10.7	10.7	10.8

# NSB 100FT RED Battery<sup>®</sup>

Discharge tables @ 25°C (77°F)



## Current / A

Duration		End of Discharge Voltage					
Minutes	Hours	1.85	1.80	1.75	1.70	1.67	1.65
60	1	67.8	69.0	70.2	71.3	71.9	72.3
120	2	39.9	40.2	40.6	40.9	41.1	41.2
180	3	28.6	28.8	29.0	29.2	29.3	29.4
240	4	22.4	22.5	22.7	22.9	22.9	23.0
300	5	18.4	18.6	18.7	18.9	18.9	18.9
480	8	12.1	12.2	12.4	12.5	12.5	12.5
600	10	9.9	10.0	10.1	10.2	10.2	10.2
1200	20	5.2	5.3	5.3	5.4	5.4	5.4

## Capacity / Ah

Duration		End of Discharge Voltage					
Minutes	Hours	1.85	1.80	1.75	1.70	1.67	1.65
60	1	67.8	69.0	70.2	71.3	71.9	72.3
120	2	79.8	80.5	81.1	81.8	82.2	82.4
180	3	85.7	86.4	87.0	87.6	87.9	88.1
240	4	89.4	90.2	90.9	91.4	91.7	91.9
300	5	92.0	92.9	93.7	94.3	94.6	94.7
480	8	96.7	97.9	98.9	99.7	100.0	100.2
600	10	98.6	100.0	101.1	101.9	102.3	102.5
1200	20	103.6	105.2	106.5	107.5	107.9	108.1

## Power / WPC

Duration		End of Discharge Voltage					
Minutes	Hours	1.85	1.80	1.75	1.70	1.67	1.65
60	1	132.6	134.6	136.6	138.3	139.3	139.9
120	2	78.9	79.5	80.1	80.6	80.9	81.1
180	3	56.9	57.2	57.6	57.9	58.1	58.2
240	4	44.7	45.0	45.3	45.5	45.6	45.7
300	5	36.8	37.1	37.4	37.6	37.7	37.7
480	8	24.3	24.6	24.8	24.9	25.0	25.0
600	10	19.8	20.1	20.3	20.4	20.5	20.5
1200	20	10.5	10.6	10.7	10.8	10.8	10.8

# NSB 155FT RED Battery<sup>®</sup>

Discharge tables @ 20°C (68°F)



## Current / A

Duration		End of Discharge Voltage					
Minutes	Hours	1.85	1.80	1.75	1.70	1.67	1.65
60	1	99.6	102.8	105.6	108.1	109.3	110.1
120	2	59.9	61.0	61.9	62.7	63.1	63.4
180	3	43.4	43.9	44.3	44.7	44.8	44.9
240	4	34.1	34.4	34.7	34.8	34.9	35.0
300	5	28.2	28.4	28.5	28.6	28.7	28.7
480	8	18.7	18.7	18.8	18.8	18.8	18.8
600	10	15.3	15.3	15.3	15.3	15.3	15.3
1200	20	8.0	8.1	8.1	8.1	8.1	8.1

## Capacity / Ah

Duration		End of Discharge Voltage					
Minutes	Hours	1.85	1.80	1.75	1.70	1.67	1.65
60	1	99.6	102.8	105.6	108.1	109.3	110.1
120	2	119.8	122.0	123.9	125.5	126.3	126.7
180	3	130.1	131.6	133.0	134.0	134.5	134.8
240	4	136.5	137.7	138.6	139.4	139.7	139.9
300	5	141.1	141.9	142.6	143.2	143.4	143.6
480	8	149.2	149.7	150.0	150.3	150.4	150.4
600	10	152.5	152.9	153.1	153.3	153.4	153.4
1200	20	160.9	161.4	161.9	162.3	162.5	162.6

## Power / WPC

Duration		End of Discharge Voltage					
Minutes	Hours	1.85	1.80	1.75	1.70	1.67	1.65
60	1	195.9	200.7	204.9	208.4	210.2	211.2
120	2	119.4	121.0	122.4	123.6	124.1	124.4
180	3	86.8	87.6	88.3	88.8	89.1	89.3
240	4	68.5	69.0	69.4	69.7	69.8	69.9
300	5	56.7	57.0	57.3	57.5	57.6	57.6
480	8	37.5	37.7	37.8	37.9	38.0	38.0
600	10	30.7	30.8	30.9	31.0	31.0	31.1
1200	20	16.2	16.3	16.4	16.4	16.4	16.5

# NSB 155FT RED Battery<sup>®</sup>

Discharge tables @ 25°C (77°F)



## Current / A

Duration		End of Discharge Voltage					
Minutes	Hours	1.85	1.80	1.75	1.70	1.67	1.65
60	1	103.9	107.3	110.2	112.7	114.0	114.8
120	2	61.9	63.0	64.0	64.8	65.2	65.4
180	3	44.6	45.1	45.5	45.9	46.1	46.2
240	4	35.0	35.2	35.5	35.7	35.8	35.8
300	5	28.8	29.0	29.1	29.2	29.3	29.3
480	8	19.0	19.0	19.1	19.1	19.1	19.1
600	10	15.5	15.5	15.5	15.5	15.6	15.6
1200	20	8.1	8.1	8.2	8.2	8.2	8.2

## Capacity / Ah

Duration		End of Discharge Voltage					
Minutes	Hours	1.85	1.80	1.75	1.70	1.67	1.65
60	1	103.9	107.3	110.2	112.7	114.0	114.8
120	2	123.8	126.0	128.0	129.6	130.4	130.9
180	3	133.7	135.3	136.6	137.7	138.3	138.6
240	4	139.8	141.0	142.0	142.7	143.1	143.3
300	5	144.1	145.0	145.7	146.2	146.5	146.6
480	8	151.7	152.1	152.5	152.7	152.8	152.8
600	10	154.7	155.0	155.3	155.4	155.5	155.5
1200	20	162.1	162.6	163.1	163.5	163.7	163.8

## Power / WPC

Duration		End of Discharge Voltage					
Minutes	Hours	1.85	1.80	1.75	1.70	1.67	1.65
60	1	204.4	209.3	213.7	217.3	219.2	220.3
120	2	123.4	125.0	126.5	127.6	128.2	128.5
180	3	89.2	90.0	90.7	91.3	91.6	91.7
240	4	70.2	70.6	71.0	71.4	71.5	71.6
300	5	57.9	58.2	58.5	58.7	58.8	58.9
480	8	38.1	38.3	38.4	38.5	38.6	38.6
600	10	31.1	31.2	31.3	31.4	31.5	31.5
1200	20	16.3	16.4	16.5	16.5	16.6	16.6

# NSB 170FT RED Battery<sup>®</sup>

Discharge tables @ 20°C (68°F)



## Current / A

Duration		End of Discharge Voltage					
Minutes	Hours	1.85	1.80	1.75	1.70	1.67	1.65
60	1	108.4	111.4	114.1	116.6	117.9	118.7
120	2	65.3	66.2	67.1	67.8	68.2	68.4
180	3	47.3	47.7	48.1	48.5	48.6	48.7
240	4	37.2	37.5	37.7	37.9	38.0	38.1
300	5	30.8	31.0	31.1	31.3	31.3	31.3
480	8	20.4	20.5	20.6	20.6	20.6	20.6
600	10	16.7	16.8	16.8	16.9	16.9	16.9
1200	20	8.9	8.9	9.0	9.0	9.0	9.0

## Capacity / Ah

Duration		End of Discharge Voltage					
Minutes	Hours	1.85	1.80	1.75	1.70	1.67	1.65
60	1	108.4	111.4	114.1	116.6	117.9	118.7
120	2	130.6	132.5	134.2	135.7	136.4	136.9
180	3	141.8	143.2	144.4	145.4	145.9	146.2
240	4	148.8	150.0	151.0	151.7	152.1	152.3
300	5	153.8	154.8	155.7	156.3	156.5	156.6
480	8	162.9	163.9	164.5	165.0	165.1	165.2
600	10	166.7	167.7	168.4	168.8	168.9	169.0
1200	20	177.1	178.3	179.3	180.0	180.3	180.5

## Power / WPC

Duration		End of Discharge Voltage					
Minutes	Hours	1.85	1.80	1.75	1.70	1.67	1.65
60	1	212.2	216.9	221.2	224.8	226.8	228.0
120	2	129.6	131.1	132.3	133.4	134.0	134.3
180	3	94.3	95.0	95.7	96.2	96.4	96.6
240	4	74.4	74.9	75.3	75.6	75.7	75.8
300	5	61.6	62.0	62.3	62.5	62.6	62.6
480	8	40.9	41.1	41.3	41.4	41.5	41.5
600	10	33.5	33.7	33.8	33.9	34.0	34.0
1200	20	17.8	17.9	18.0	18.1	18.2	18.2

# NSB 170FT RED Battery<sup>®</sup>

Discharge tables @ 25°C (77°F)



## Current / A

Duration		End of Discharge Voltage					
Minutes	Hours	1.85	1.80	1.75	1.70	1.67	1.65
60	1	113.0	116.2	119.0	121.6	123.0	123.8
120	2	67.4	68.4	69.3	70.1	70.5	70.7
180	3	48.6	49.1	49.5	49.8	50.0	50.1
240	4	38.1	38.4	38.7	38.8	38.9	39.0
300	5	31.4	31.6	31.8	31.9	32.0	32.0
480	8	20.7	20.8	20.9	21.0	21.0	21.0
600	10	16.9	17.0	17.1	17.1	17.1	17.1
1200	20	8.9	9.0	9.0	9.1	9.1	9.1

## Capacity / Ah

Duration		End of Discharge Voltage					
Minutes	Hours	1.85	1.80	1.75	1.70	1.67	1.65
60	1	113.0	116.2	119.0	121.6	123.0	123.8
120	2	134.9	136.9	138.6	140.1	140.9	141.4
180	3	145.7	147.2	148.4	149.4	150.0	150.3
240	4	152.4	153.6	154.6	155.4	155.7	155.9
300	5	157.1	158.2	159.0	159.6	159.9	160.0
480	8	165.6	166.5	167.2	167.7	167.8	167.9
600	10	169.0	170.0	170.7	171.2	171.3	171.3
1200	20	178.4	179.6	180.6	181.4	181.7	181.8

## Power / WPC

Duration		End of Discharge Voltage					
Minutes	Hours	1.85	1.80	1.75	1.70	1.67	1.65
60	1	221.3	226.3	230.7	234.5	236.6	237.8
120	2	133.9	135.4	136.7	137.8	138.4	138.8
180	3	96.9	97.7	98.3	98.8	99.1	99.2
240	4	76.2	76.7	77.1	77.4	77.6	77.6
300	5	63.0	63.3	63.6	63.8	63.9	64.0
480	8	41.6	41.8	41.9	42.1	42.1	42.2
600	10	34.0	34.2	34.3	34.4	34.5	34.5
1200	20	18.0	18.1	18.2	18.3	18.3	18.3

# NSB 190FT RED Battery<sup>®</sup>

Discharge tables @ 20°C (68°F)



## Current / A

Duration		End of Discharge Voltage					
Minutes	Hours	1.85	1.80	1.75	1.70	1.67	1.65
60	1	115.6	119.7	123.4	126.8	128.6	129.7
120	2	71.1	72.5	73.6	74.7	75.2	75.5
180	3	52.1	52.7	53.2	53.6	53.8	54.0
240	4	41.4	41.6	41.9	42.1	42.2	42.2
300	5	34.4	34.5	34.6	34.7	34.7	34.8
480	8	22.9	22.9	22.9	22.9	22.9	22.9
600	10	18.7	18.7	18.7	18.7	18.7	18.7
1200	20	9.8	9.8	9.9	9.9	9.9	9.9

## Capacity / Ah

Duration		End of Discharge Voltage					
Minutes	Hours	1.85	1.80	1.75	1.70	1.67	1.65
60	1	115.6	119.7	123.4	126.8	128.6	129.7
120	2	142.3	144.9	147.3	149.3	150.4	151.0
180	3	156.4	158.1	159.6	160.9	161.5	161.9
240	4	165.4	166.6	167.5	168.3	168.6	168.8
300	5	171.8	172.5	173.1	173.5	173.7	173.8
480	8	183.0	183.2	183.3	183.3	183.2	183.2
600	10	187.3	187.4	187.4	187.4	187.3	187.2
1200	20	196.2	196.9	197.6	198.1	198.3	198.4

## Power / WPC

Duration		End of Discharge Voltage					
Minutes	Hours	1.85	1.80	1.75	1.70	1.67	1.65
60	1	226.7	233.3	239.2	244.4	247.2	248.9
120	2	141.0	143.2	145.0	146.7	147.5	148.0
180	3	103.8	104.8	105.6	106.3	106.6	106.8
240	4	82.6	83.1	83.5	83.8	83.9	84.0
300	5	68.7	69.0	69.2	69.4	69.4	69.5
480	8	45.9	46.0	46.0	46.0	46.0	46.0
600	10	37.7	37.7	37.7	37.7	37.7	37.7
1200	20	19.8	19.9	19.9	20.0	20.0	20.0

# NSB 190FT RED Battery<sup>®</sup>

Discharge tables @ 25°C (77°F)



## Current / A

Duration		End of Discharge Voltage					
Minutes	Hours	1.85	1.80	1.75	1.70	1.67	1.65
60	1	120.5	124.8	128.8	132.3	134.1	135.3
120	2	73.5	74.9	76.1	77.1	77.7	78.0
180	3	53.6	54.2	54.7	55.1	55.3	55.4
240	4	42.4	42.6	42.9	43.1	43.2	43.2
300	5	35.1	35.2	35.4	35.4	35.5	35.5
480	8	23.2	23.3	23.3	23.3	23.3	23.3
600	10	19.0	19.0	19.0	19.0	19.0	19.0
1200	20	9.9	9.9	10.0	10.0	10.0	10.0

## Capacity / Ah

Duration		End of Discharge Voltage					
Minutes	Hours	1.85	1.80	1.75	1.70	1.67	1.65
60	1	120.5	124.8	128.8	132.3	134.1	135.3
120	2	147.0	149.7	152.1	154.2	155.3	156.0
180	3	160.7	162.5	164.0	165.3	166.0	166.3
240	4	169.4	170.6	171.5	172.3	172.7	172.9
300	5	175.4	176.2	176.8	177.2	177.4	177.5
480	8	186.0	186.2	186.3	186.3	186.2	186.1
600	10	189.9	190.0	190.0	190.0	189.9	189.8
1200	20	197.7	198.4	199.0	199.5	199.8	199.9

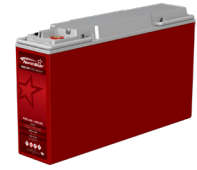
## Power / WPC

Duration		End of Discharge Voltage					
Minutes	Hours	1.85	1.80	1.75	1.70	1.67	1.65
60	1	236.5	243.3	249.5	255.0	257.8	259.6
120	2	145.7	147.9	149.8	151.5	152.4	152.9
180	3	106.7	107.7	108.5	109.2	109.6	109.8
240	4	84.6	85.1	85.5	85.8	86.0	86.1
300	5	70.2	70.5	70.7	70.8	70.9	71.0
480	8	46.7	46.7	46.8	46.8	46.8	46.8
600	10	38.2	38.2	38.2	38.2	38.2	38.2
1200	20	19.9	20.0	20.1	20.1	20.1	20.2



# NSB 210FT RED Battery<sup>®</sup>

Discharge tables @ 20°C (77°F)



## Current / A

Duration		End of Discharge Voltage					
Minutes	Hours	1.85	1.80	1.75	1.70	1.67	1.65
60	1	128.6	133.8	138.3	142.2	144.2	145.4
120	2	79.1	80.7	82.0	83.2	83.8	84.2
180	3	57.6	58.3	58.9	59.4	59.7	59.8
240	4	45.5	45.8	46.1	46.4	46.6	46.6
300	5	37.6	37.8	38.0	38.2	38.3	38.3
480	8	24.9	25.0	25.0	25.1	25.1	25.2
600	10	20.4	20.4	20.5	20.5	20.5	20.6
1200	20	10.8	10.8	10.9	10.9	11.0	11.0

## Capacity / Ah

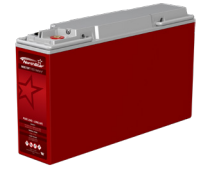
Duration		End of Discharge Voltage					
Minutes	Hours	1.85	1.80	1.75	1.70	1.67	1.65
60	1	128.6	133.8	138.3	142.2	144.2	145.4
120	2	158.2	161.3	164.1	166.4	167.6	168.3
180	3	172.9	174.9	176.7	178.2	179.0	179.5
240	4	181.9	183.3	184.5	185.6	186.2	186.5
300	5	188.1	189.1	190.0	190.9	191.3	191.6
480	8	199.2	199.7	200.3	200.7	201.0	201.2
600	10	203.7	204.2	204.6	205.1	205.4	205.5
1200	20	215.5	216.7	217.8	218.7	219.2	219.5

## Power / WPC

Duration		End of Discharge Voltage					
Minutes	Hours	1.85	1.80	1.75	1.70	1.67	1.65
60	1	250.4	258.7	265.8	271.8	274.8	276.6
120	2	156.0	158.5	160.7	162.5	163.5	164.0
180	3	114.4	115.5	116.4	117.2	117.7	117.9
240	4	90.7	91.2	91.7	92.1	92.4	92.5
300	5	75.2	75.5	75.8	76.1	76.2	76.3
480	8	50.0	50.1	50.2	50.3	50.4	50.4
600	10	41.0	41.0	41.1	41.2	41.3	41.3
1200	20	21.7	21.8	21.9	22.0	22.0	22.1

# NSB 210FT RED Battery<sup>®</sup>

Discharge tables @ 25°C (77°F)



## Current / A

Duration		End of Discharge Voltage					
Minutes	Hours	1.85	1.80	1.75	1.70	1.67	1.65
60	1	134.2	139.5	144.2	148.3	150.4	151.6
120	2	81.7	83.3	84.8	86.0	86.6	86.9
180	3	59.2	59.9	60.5	61.1	61.3	61.5
240	4	46.6	46.9	47.2	47.5	47.7	47.8
300	5	38.4	38.6	38.8	39.0	39.1	39.1
480	8	25.3	25.4	25.4	25.5	25.5	25.6
600	10	20.6	20.7	20.7	20.8	20.8	20.8
1200	20	10.9	10.9	11.0	11.0	11.0	11.1

## Capacity / Ah

Duration		End of Discharge Voltage					
Minutes	Hours	1.85	1.80	1.75	1.70	1.67	1.65
60	1	134.2	139.5	144.2	148.3	150.4	151.6
120	2	163.4	166.7	169.5	171.9	173.2	173.9
180	3	177.6	179.7	181.6	183.2	184.0	184.5
240	4	186.2	187.7	189.0	190.1	190.7	191.0
300	5	192.1	193.2	194.1	194.9	195.4	195.7
480	8	202.4	203.0	203.5	204.0	204.3	204.5
600	10	206.5	207.0	207.5	208	208.2	208.4
1200	20	217.1	218.3	219.4	220.3	220.8	221.1

## Power / WPC

Duration		End of Discharge Voltage					
Minutes	Hours	1.85	1.80	1.75	1.70	1.67	1.65
60	1	261.2	269.8	277.3	283.5	286.7	288.5
120	2	161.1	163.7	166.0	167.9	168.9	169.4
180	3	117.6	118.7	119.6	120.5	120.9	121.2
240	4	92.8	93.4	93.9	94.3	94.6	94.7
300	5	76.8	77.1	77.4	77.7	77.9	78.0
480	8	50.8	50.9	51.0	51.1	51.2	51.3
600	10	41.6	41.6	41.7	41.8	41.8	41.9
1200	20	21.9	22.0	22.1	22.2	22.2	22.2