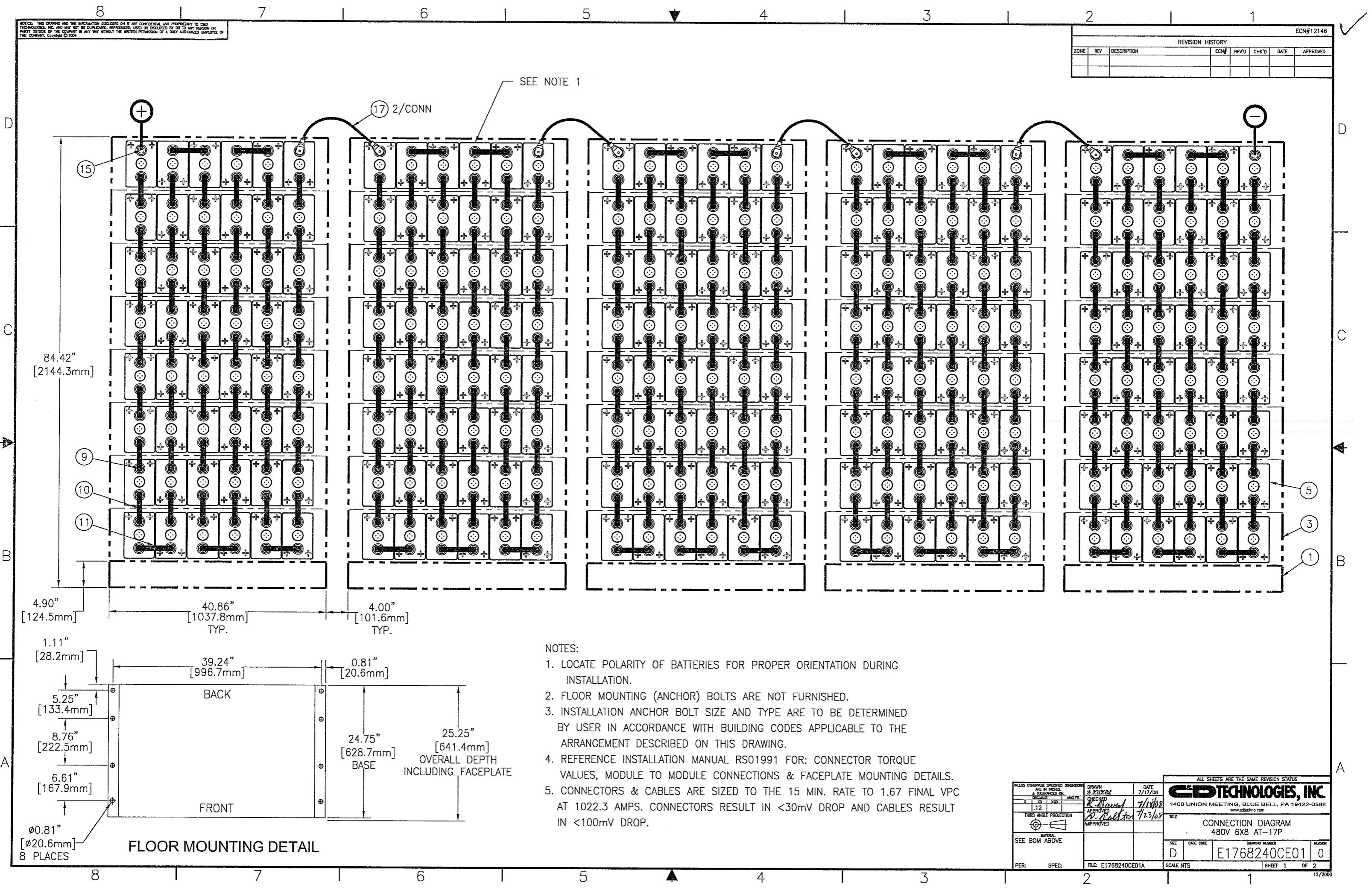


NOTICE: THIS DRAWING AND THE INFORMATION DISCLOSED ON IT ARE CONFIDENTIAL AND PROPRIETARY TO CAD TECHNOLOGIES, INC. AND MAY NOT BE DUPLICATED, REPRODUCED, USED OR DISCLOSED BY OR TO ANY PERSON OR PARTY OUTSIDE OF THE COMPANY IN ANY WAY WITHOUT THE WRITTEN PERMISSION OF A DULY AUTHORIZED EMPLOYEE OF THE COMPANY. COPYRIGHT © 2004

ECN#12146

REVISION HISTORY							
ZONE	REV	DESCRIPTION	ECN#	REV'D	CHK'D	DATE	APPROVED



SEE NOTE 1

17 2/CONN

15

9

10

11

5

3

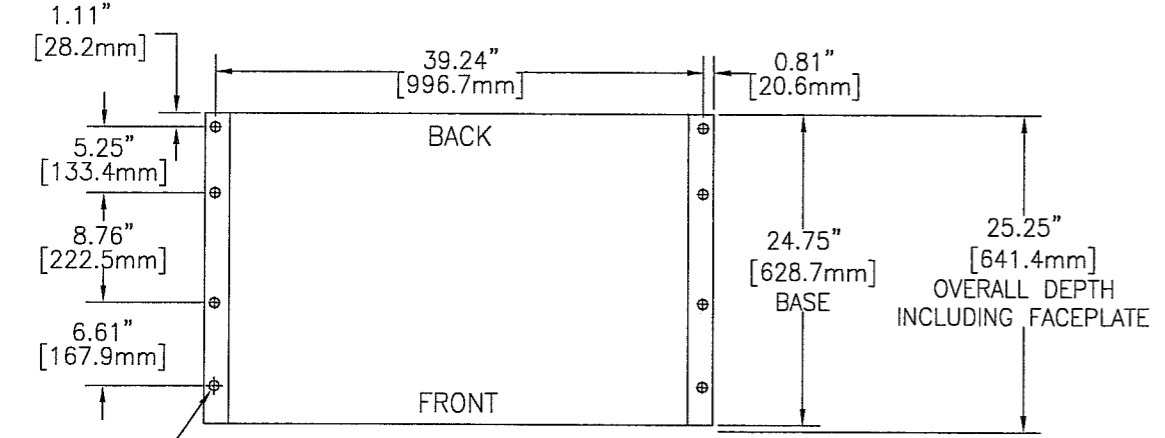
1

84.42"
[2144.3mm]

4.90"
[124.5mm]

40.86"
[1037.8mm]
TYP.

4.00"
[101.6mm]
TYP.



FLOOR MOUNTING DETAIL

NOTES:

1. LOCATE POLARITY OF BATTERIES FOR PROPER ORIENTATION DURING INSTALLATION.
2. FLOOR MOUNTING (ANCHOR) BOLTS ARE NOT FURNISHED.
3. INSTALLATION ANCHOR BOLT SIZE AND TYPE ARE TO BE DETERMINED BY USER IN ACCORDANCE WITH BUILDING CODES APPLICABLE TO THE ARRANGEMENT DESCRIBED ON THIS DRAWING.
4. REFERENCE INSTALLATION MANUAL RSO1991 FOR: CONNECTOR TORQUE VALUES, MODULE TO MODULE CONNECTIONS & FACEPLATE MOUNTING DETAILS.
5. CONNECTORS & CABLES ARE SIZED TO THE 15 MIN. RATE TO 1.67 FINAL VPC AT 1022.3 AMPS. CONNECTORS RESULT IN <30mV DROP AND CABLES RESULT IN <100mV DROP.

UNLESS OTHERWISE SPECIFIED DIMENSIONS ARE IN INCHES. TOLERANCES ON DIMENSIONS:		DRAWN S. KILKUSZ	DATE 7/17/08	ALL SHEETS ARE THE SAME REVISION STATUS	
X	XX	CHECKED R. N. [Signature]	7/18/08	 1400 UNION MEETING, BLUE BELL, PA 19422-0588 www.cadtechno.com	
Y	YY	APPROVED R. N. [Signature]	7/23/08		
THIRD ANGLE PROJECTION		APPROVED		TITLE CONNECTION DIAGRAM 480V 6XB AT-17P	
SEE BOM ABOVE		FILE: E1768240CE01A		SIZE D	CASE CODE E1768240CE01
PER:	SPEC:	SCALE NTS		SHEET 1	OF 2

NOTICE: THIS DRAWING AND THE INFORMATION DISCLOSED ON IT ARE CONFIDENTIAL AND PROPRIETARY TO CAD TECHNOLOGIES, INC. AND MAY NOT BE REPRODUCED, REPRODUCED, USED OR DISCLOSED BY OR TO ANY PERSON OR PARTY OUTSIDE OF THE COMPANY IN ANY WAY WITHOUT THE WRITTEN PERMISSION OF A DULY AUTHORIZED EMPLOYEE OF THE COMPANY. Copyright © 2004.

ECN#12146

REVISION HISTORY						
ZONE	REV	DESCRIPTION	EDN#	REV'D	CHK'D	DATE

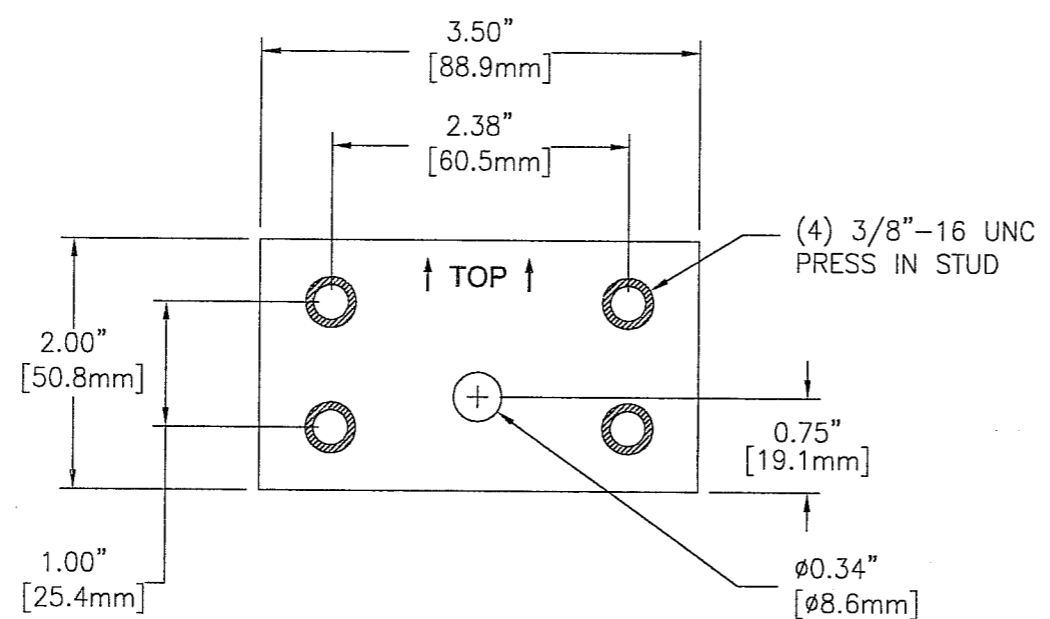
480 VOLT SYSTEM (240) AT-17P CELLS

APPROX. SYSTEM WEIGHT: 34,970 LBS [15862.1 kg]
FLOOR CONTACT AREA: 371.25 SQ. IN. [239,515 mm²]



SYSTEM NO. E1768240CE01

20	1	RE04455-240	ACCESSORY KIT (J29537)
19			
18			
17	8	RA02250-21	4/0 CABLE 21" LONG
16			
15	2	PT00962T	TERMINAL PLATE (M15923)
14			
13			
12			
11	25	PK04276T	CONNECTOR 1.50 x 7.12 x 0.19
10	210	PK04097T	CONNECTOR 1.50 x 5.96 x 0.12
9	20	HDWR-R11	HARDWARE KIT, CONNECTOR
9.1	480	PB00327	BOLT, HEX 5/16-18 x 1.25 S.S.
9.2	480	PH01700	WASHER, FLAT S.S.
8	40	PH04006-40	FACEPLATE (K11056)
7	45	HDWR-R13	HARDWARE KIT, FACEPLATE (J29535)
5	240	CW18149	CELL (N03375)
3	40	RD04496P-40D	MODULE ASSEMBLY KIT (M14111)
1	5	RD04407-40A	BASE ASSEMBLY KIT (M14028)
ITEM	QTY	PART NO.	DESCRIPTION



TERMINAL PLATE DETAIL
PART NO. PT00962T

<small>UNLESS OTHERWISE SPECIFIED DIMENSIONS ARE IN INCHES & TOLERANCES ARE:</small> FINISHES: X XX XXX TOLERANCE: .12 THIRD ANGLE PROJECTION <small>NATIONAL SEE BOM ABOVE</small>		<small>DRAWN BY: J23/KCB</small> <small>DATE: 7/17/08</small> <small>CHECKED: [Signature]</small> <small>APPROVED: [Signature]</small>	<small>ALL SHEETS ARE THE SAME REVISION STATUS</small> CAD TECHNOLOGIES, INC. <small>1400 UNION MEETING, BLUE BELL, PA 19422-0588</small> <small>www.cdtechno.com</small> CONNECTION DIAGRAM 480V 6X8 AT-17P SIZE: D CASE CODE: DRAWING NUMBER: E1768240CE01 REVISION: 0 PER: SPEC: FILE: E1768240CE01B SCALE: NTS SHEET 2 OF 2
---	--	---	---